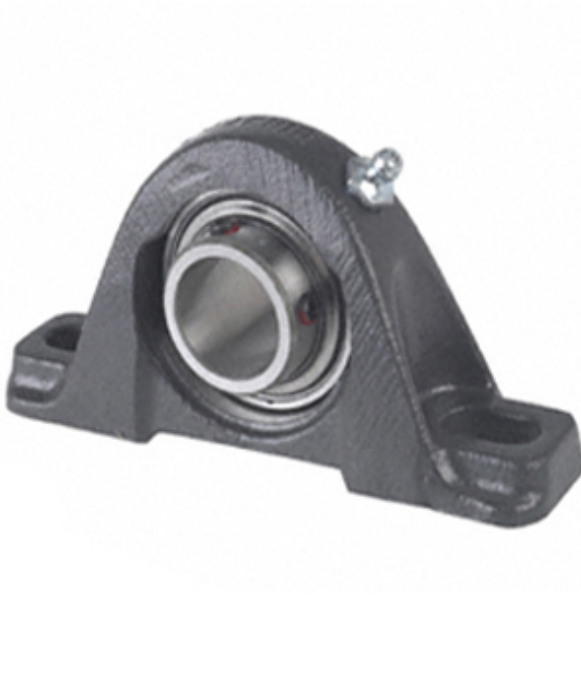




BEARING DRIVESHAFT, INC.



YAK2 11/16 Bearing 2D drawings and 3D CAD models

2.688 Inch | 68.275 Millimeter x 2.75 Inch | 69.85 Millimeter x 3 Inch | 76.2 Millimeter TIMKEN YAK2 11/16 Pillow Block Bearings

Bearing No. YAK2 11/16

Category	Pillow Block Bearings
Inventory	0.0
Manufacturer Name	TIMKEN
Minimum Buy Quantity	N/A
Weight	7.32
EAN	0087796157620
Product Group	M06110
Number of Mounting Holes	2
Mounting Method	Set Screw
Housing Style	2 Bolt Pillow Block
Rolling Element	Ball Bearing
Housing Material	Cast Iron
Expansion / Non-expansion	Non-expansion
Mounting Bolts	3/4 Inch
Relubricatable	Yes
Insert Part Number	GY1211KRRB
Seals	Double Land Riding Rubber Contact
Housing Configuration	1 Piece Solid
Inch - Metric	Inch
Other Features	Single Row Spherical Normal Duty Low Base
Long Description	2 Bolt Pillow Block; 2-11/16" Bore; 3" Base to Center Height; Set Screw Mount; Ball Bearing; 6-5/8"



BEARING DRIVESHAFT, INC.

	Minimum Bolt Spacing; 9-3/8" Bolt Spacing Maximum; Relubricatable; Cast Iron; Do
Category	Pillow Block
UNSPSC	31171511
Harmonized Tariff Code	8483.20.40.40
Noun	Bearing
Keyword String	Pillow Block
Manufacturer URL	http://www.timken.com
Manufacturer Item Number	YAK 2 11/16
Weight / LBS	16.118
Nominal Bolt Center to Center	8 Inch 203 Millimeter
Actual Bolt Center to Center	0 Inch 0 Millimeter
B	3 Inch 76.2 Millimeter
D	2.75 Inch 69.85 Millimeter
Bolt Spacing Minimum	6.625 Inch 168.275 Millimeter
Bolt Spacing Maximum	9.375 Inch 238.125 Millimeter
d	2.688 Inch 68.275 Millimeter